



**Priefert®**

**FAIR, EXPO & Rodeo EQUIPMENT**



# TABLE OF CONTENTS

## ROPING CHUTES & ACCESSORIES.....4

- Roping Chutes.....5-6
- Control Boxes.....6
- Calf Chutes.....7
- Roping Chute Accessories.....7-8

## BUCKING CHUTES & ACCESSORIES...9

- Bucking Chutes.....10-11
- Adjust-a-Bull.....12-13
- Bucking Chute Accessories.....14

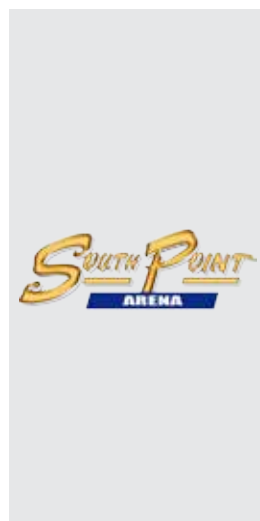
## ARENAS & ACCESSORIES.....15

- Riding Arenas.....16
- Rough Stock Arenas.....17
- Roping Arenas.....18-19
- Combination Arenas.....20
- Arrow Pens.....21
- Panels.....22-23
- Arena Accessories.....24

## EXPO STALLS & LIVESTOCK PENS...25

- Expo Stalls.....26-27
- Expo Conversion Kit.....27
- Sheep, Hog & Goat Panels.....28
- Tie Stall Panels.....29
- Rock Bottom Products.....30
- Product Storage Racks.....31
- Ponderosa Fence.....32

## PRIEFERT COMPLEX DESIGNS.....33



"We feel like the South Point Arena & Equestrian Center is the premier equestrian facility in the country. Because of that, we only want to work with products, promoters, and vendors who are also premier in their respective categories. Priefert Manufacturing is absolutely THE premier Rodeo & Ranch Equipment in the country."

**STEVE STALLWORTH**  
GENERAL MANAGER  
SOUTH POINT ARENA & EQUESTRIAN CENTER

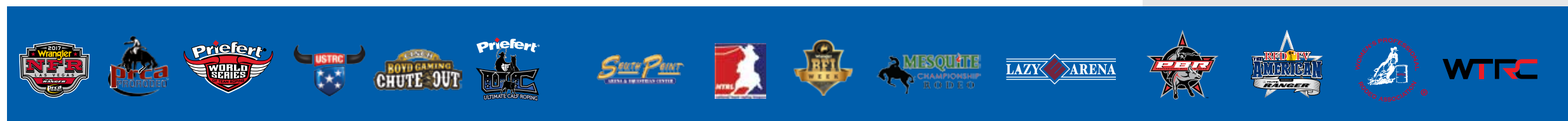


"The PRCA sets the stage for rodeo standards. As the largest and oldest rodeo sanctioning body in the world, we strive to partner with only the best in the industry and Priefert is at the top of that list. Their product and staff are second to none and we are proud to call them a partner."

**STEVE REMPELOS**  
CHIEF MARKETING OFFICER  
PROFESSIONAL RODEO COWBOYS ASSOC.

# OVER 50 YEARS OF EXPERIENCE MANUFACTURING LIVESTOCK EQUIPMENT

Priefert is recognized as having the highest quality equipment on the market. Considered the leading innovator in the industry, Priefert continues to develop and produce equipment that is safe and durable for both the animal and the operator. When it comes to the specialized equipment needs for rodeo arenas, fairgrounds, and expo centers, Priefert offers expert consulting and design. From the Wrangler National Finals Rodeo arena each year in Las Vegas to the stalls for Quarter Horse Congress at the Ohio Expo Center, Priefert is proud to have its products used and endorsed by the top cattle, equine, rodeo and roping organizations in the country.





# ROPING CHUTES & Accessories

Any pro will tell you it's important to "Practice Like You Compete" and, when it comes to roping, that means using Priefert Roping Chutes and Accessories. As the Official Roping Chute of the PRCA, the USTRC, the World Series of Team Roping, RFD-TV's The American, and countless other organizations and events, Priefert Roping Chutes are the most popular chute in America. Priefert is proud to offer a variety of roping chute options and related accessories to meet the needs of amateur and professional ropers alike. Whether you're looking at the premier venues in the sport of roping or in the backyard practice pens across the country, Priefert chutes are the most trusted chutes on the market.



Photo Courtesy of NFR

## MOST DOMINANT CHUTE ON THE MARKET.

The most widely used chute in the country, Priefert Roping Chutes are the official chute of the PRCA and every major roping organization. Endorsements by World Champion cowboys have made this chute the most popular piece of equipment in arenas across the nation. Its easy fingertip touch release and spring-assisted opening ensure that every roper gets the same release of the calf or steer. The RC98M is the quietest, most durable, and easiest to use chute on the market.



## RC98M MANUAL ROPING CHUTE

- Unique breaking system virtually eliminates noise and prevents backlash from the front gates
- Easy to operate from either side with fingertip touch release and spring-assisted opening
- Contoured sides narrow at the bottom to discourage animals from turning around in the chute

**Overall Height: 63"**  
**Overall Width: 36"**  
**Inside Width at Top: 30"**  
**Inside Width at Bottom: 14"**  
**Overall Length: 86"**

Official Chute used by:



"I personally love the functionality and ease of use of the Priefert Roping Chute! Not to mention it can take tens of thousands of runs and keep on working! The dependability of the Priefert Roping Chute has made it a cornerstone in rodeo arenas across America!"

**TYSON DURFEY | WORLD CHAMPION TIE-DOWN ROPER**





## ROPING CHUTES



### RC98SCOREAI SCORE CHUTE

The *ULTIMATE* Training Aid for ropers, the interior neck gate allows the roper to hold the steer inside the chute and repeatedly open the front gate to "score" his or her horse.

Length: 86"  
Width: 36"  
Height: 68"



### RC98AI AUTOMATIC ROPING CHUTE

Ideal for the practice pen, this chute virtually eliminates the need for extra chute help. The push of a button operates the features of this chute.

Length: 86"  
Width: 36"  
Height: 68"



### RC98Q36 SOLAR-POWERED ROPING CHUTE

This state-of-the-art solar-powered roping chute requires no electrical cords or air lines, just the sun. A simple remote operates the front release gate.

Length: 86"  
Width: 36"  
Height: 64"



### RC98C COMPETITION ROPING CHUTE

The most popular choice for fairgrounds and rodeo arenas, this chute offers the same features of the RC98M, plus additional upgrades designed for competition arenas.

Length: 106"  
Width: 36"  
Height: 64"

## ROPING CHUTE CONTROL BOXES

Priefert manual roping chutes can easily be upgraded with the addition of a Q36 or Fully Automatic Box.

### Q36 SOLAR-POWERED CONTROL BOX

Upgrade the RC98M to a solar-powered, remote-operated front release chute.



### RC98ASRAI FULLY AUTOMATIC CONTROL BOX

Upgrade the RC98M to a fully automatic, remote-operated chute. Requires electric and air lines.

## CALF CHUTES

Priefert's Calf Chute is ideal for the cowboy or cowgirl who only ropes calves. It offers the same great functionality of our larger chutes at a fraction of the size and a fraction of the price. This chute was designed and quality tested with the help of 8-time World Champion Calf Roper Roy Cooper. Priefert also offers a Fully Automatic Calf Chute which allows the roper to operate all the functions of the chute from a simple remote control.



### RCCALF CALF CHUTE

• Length: 63"  
• Width: 21"  
• Height: 50"

Official Chute used by:



### RCCALFA AUTOMATIC CALF CHUTE

• Length: 63"  
• Width: 21"  
• Height: 55"

## ROPING CHUTE SECTIONS

Priefert's Roping Chute Add-on Section helps lend speed and efficiency to any roping competition by allowing producers to keep animals staged and ready for the next run. Each add-on section features contoured sides made to the same specifications as our roping chutes to create a seamless flow from section to chute. Each also includes a split tailgate at the rear that opens from either side. Cross bars over the top of the add-ons prevent animals from being able to jump out of the section.

### RCS98 ROPING CHUTE ADD-ON SECTION



Length: 73"  
Width: 36"  
Height: 64"

### RCS98C STRIPPING CHUTE ADD-ON SECTION



Length: 107"  
Width: 36"  
Height: 65"

### RCSTELAO+ TELESCOPING ADD-ON SECTION



Length:  
72.5" – 130.5"  
Width: 36"  
Height: 65"

## STEER ALLEY KITS

Ideal for constructing lead ups to roping chutes, Priefert's Steer Alley Kits are made to the same specifications as our standard roping chutes and add-on sections to create a seamless flow from alley to section to chute. The Architectural Grade Powder Coat Finish helps the product to resist rust, scratches, and fading.



### SP08AK 8' ALLEY SECTION

Length: 8'  
Height: 54"



### SP90AK 90° TURN FOR STEER ALLEY

Height: 54"



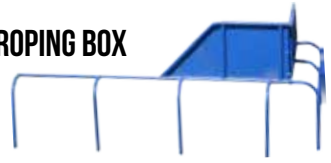
### ASU NO BACK ALLEY STOP

Length: 38"  
Width: 38"

# ROPING BOXES

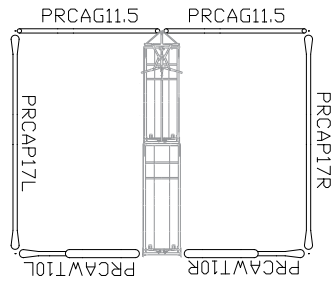
Priefert offers a variety of Roping Boxes, including boxes built to the PRCA standards. Standard Priefert Roping Boxes are sold individually as a "Right Box" or "Left Box" and feature an Architectural Grade Powder Coat Finish. Our traditional boxes feature arched legs to provide better bracing and prevent injuries to horse's legs, and can available with two different style legs. Our PRCA-Style Boxes include back panels that feature a "ride thru" gate to allow ropers to enter from the back of the box, and gates that can be used to close off the limited event equipment from the arena.

## STANDARD ROPING BOX



ITEM NUMBER	DESCRIPTION
RBOX2LC	Left Side Box w/Concrete-style Leg
RBOX2RC	Right Side Box w/Concrete-style Leg
RBOX2LS	Left Side Box w/Bury-style Leg
RBOX2RS	Right Side Box w/Bury-style Leg

## PRCA-STYLE ROPING BOX



ITEM NUMBER	DESCRIPTION
PRCABOXKIT 10	10' Wide Roping Boxes
PRCABOXKIT 12	12' Wide Roping Boxes

\*Chute and Section Not Included.



# STRIPPING EQUIPMENT



## RCS98SC STRIPPING CHUTE

This Stripping Chute features openings to provide easy access for removing ropes, while an adjustable rear plate helps discourage the steer from backing out of the chute.

Length: 73"  
Width: 36"  
Height: 71"



## SCEF STRIPPING CHUTE ENTRY FRAME

- Step over bar creates entrance to the "stripping" area & discourages steer from backing out
- Chain connectors allow for quick and easy connections



## SCRG04 STRIPPING CHUTE RELEASE GATE

- Serves as a blocking gate and latches in the closed position to keep the steer in the "stripping" area until ropes have been removed
- Simply pull down of the release lever to open the gate

# ADDITIONAL ACCESSORIES



## ABC ADJUSTABLE BARRIER CAGE

Designed to be used with a laser eye setup (not included) to replace the traditional barrier system, Priefert's Adjustable Barrier Cage easily adjusts from 8' to 18' in length.

- Ideal for jackpots
- Animal safe
- Breaks down for easy transport



## RC98SP ROPING CHUTE STEER PUSHER

Designed to be mounted inside your Priefert roping chute, this keeps steers "pushed" toward the front of the chute, eliminating the need for additional chute help.

- Infinite Locking System works with any size steer
- Easy to install bolt-on design

# BUCKING CHUTES & Accessories

Designed with the assistance of professional stock contractors and competitors, Priefert Bucking Chutes are the toughest, safest, and most reliable chutes on the market. Not only do these chutes criss-cross the country as the Official Equipment of the PBR, but they've also found permanent homes in a number of the top rodeo arenas across North America, including at the Calgary Stampede, Cheyenne Frontier Days, the Days of '47 Rodeo, Spanish Fork Fiesta Days, and the Fort Worth Stock Show and Rodeo to name a few. Rugged, durable, and easy to operate, Priefert's innovative features make these chutes safe for the animals and safe for the cowboys. Priefert Bucking Chutes... The Buck Starts Here!





## BUCKING CHUTES

Priefert Bucking Chutes are chosen by industry leaders time and time again for their ruggedness, reliability, and innovative features. Designed with the cowboy, the livestock, and the chute operators in mind, Priefert's Bucking Chute design is unmatched in safety and dependability. Constructed from 8 and 11 gauge steel components, this chute is an average of 300 – 500 pounds heavier than most competitor chutes, ensuring that this sturdy chute provides years of consistent use.



Official Chute used by:



"Priefert Bucking Chutes feature an attractive design, robust feature set, and are unmatched in durability and safety for both contestants and livestock. For the best bull riders and the greatest bucking bulls in the world, PBR chooses Priefert."

**DAN HICKMAN | VP OF OPERATIONS & EVENT PRODUCTION**  
PROFESSIONAL BULL RIDERS

- Urethane lined hinges allow gates to open effortlessly. (Never use grease or oil on hinges)
- Roll gates feature ball-bearing rollers and gravity / trip latch.
- Pin connection that will fit most major competitors panels.
- "Rumber" filled roll gates.
- Tie-down bars welded to each gate.
- Roll gate guides, located at the bottom of each chute, provide safer, non-obtrusive operation.
- Sign Channels Standard on outside front gate only for advertising signage
- 5' Folding Platform Included.
- Oval 2"x6" side rails minimize leg pressure and horn catch areas.
- Spring-loaded trip latch locks when open, eliminating any threatening snags.
- Unique metal roller latch design allows gate to open under intense pressure.
- Shielded latches for added safety.
- Preamsembled Skid enhances ease of installation while also stabilizing the chute.
- Gate Adjustment bolt levels gate latch with receiver to compensate for uneven ground.
- Roll gate features dirt "Kick-Out" outlet to keep tracks free of debris which could inhibit gate functionality.

### BUCKING CHUTE SPECIFICATIONS:

Outside Length:	112"	Inside Length:	91"
Outside Width:	39"	Inside Width:	33"
Outside Height:	88"	Inside Height:	88"

5' FOLDING PLATFORM INCLUDED

**\*DO NOT use heavy oil or grease anywhere on bucking chutes.**

"I am always pleased when I pull into a rodeo that has Priefert bucking chutes. In rough stock, the start is so important and Priefert bucking chutes help the rider to get the best opportunity at a great start. I only use Priefert for my everyday use because it's safe for me and my livestock and I know that it will work right every time!"

**BOBBY MOTE | WORLD CHAMPION BAREBACK RIDER**





# ADJUST-A-BULL

## ADJUST-A-BULL BUCKING CHUTE

Priefert's latest innovation lets you quickly transform your bucking chute to fit any size bull, allowing you to safely buck miniature bulls, futurity bulls, and mature bulls all from the same chute. The new adjustable back panel can be easily set to one of four width settings to narrow or widen the chute based on the size of the bull being bucked. The interior gate can be shut behind smaller bulls to keep them pushed up inside the chute or can be completely removed when bucking mature bulls. The Adjust-a-Bull Back Panel may be purchased individually, to replace the back panel on your existing Priefert Bucking Chute, or as part of a new bucking chute.



The BUCK STARTS HERE

ITEM NUMBER	DESCRIPTION
BCARR	Adjust-a-Bull Complete Chute – Right Release
BCALR	Adjust-a-Bull Complete Chute – Left Release
BCABPLUE-P	Adjust-a-Bull Back Panel Only – Right Release
BCABPRUE-P	Adjust-a-Bull Back Panel Only – Left Release

## ADJUST-A-BULL BUCKING CHUTE FEATURES



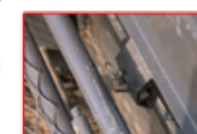
**Adjustable Back Panel:** The back panel can be quickly and easily adjusted to one of four width settings – 22", 24.5", 28.5", or 33".



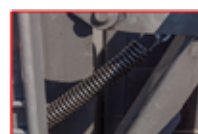
**Interior Gate Lever:** This lever allows a chute operator to manually release the interior gate without opening the bucking chute front gate.



**Adjustment Handle:** The adjustment handles on each end of the back panel must be pulled to the open or "adjust" position to allow for the back panel to be moved in or out. Once the panel is set to the desired width, return the handles to the locked position to secure the width setting.



**Interior Gate Attachment Pin:** The interior gate can be removed by simply pulling a pin and then lifting the gate up and out of the chute. We recommend removing this gate when bucking mature bulls that require the widest width setting.



**Spring-Assisted Movement:** Springs, located on each end of the back panel, assist in the movement of the back panel, making it quicker and easier to adjust.



**Roll Gate Attachment:** This attachment automatically adjusts the roll gate along with the back panel, to ensure that the roll gate only opens to the width of the chute.



**Interior Gate:** This gate can be shut behind smaller bulls to shorten the chute space. This gate latches on the Bucking Chute front gate and automatically releases when the chute gate is opened.



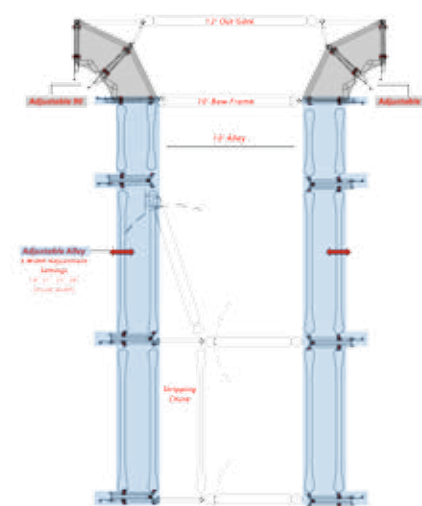
**Floating Platform Extension:** The floating platform extension is designed to "float" in and out to extend the back platform area as the back panel is adjusted to each width setting.



**Interior Gate Adjustment:** The width of the interior gate can be adjusted to ensure that it latches properly on the 3 narrowest width settings.

The BUCK STARTS HERE

## ADJUST-A-BULL ALLEY SYSTEM | QUICKLY TRANSFORM YOUR ALLEY TO FIT ANY SIZE BULL



Ask about Priefert's Adjust-a-Bull Alley System. Designed for use with Priefert's Adjust-a-Bull Bucking Chutes, this system allows you to quickly transform your loading alleys and 90 degree turns to fit any size bull. From miniature bulls to futurity bulls to mature bulls, this system is designed to provide safe, easy, and convenient chute loading.

"You can buck big bulls, futurity bulls, or mini bucking bulls all in one chute. It's a great design that takes only seconds to adjust, and every feature on this chute is built safe for the animal and safe for the rider. There is no chute out there better than a Priefert."

**MIKE WHITE**  
WORLD CHAMPION BULL RIDER



"The Adjust-A-Bull chute is an industry game-changer. Bucking bulls grow a tremendous amount between their Futurity and Derby years and this allows the animal to have a consistent chute experience every time, regardless of his size. A too-big chute can allow bad habits to develop and hamper an animal leaving the chute cleanly. These Adjust-A-Bull chutes not only lessen the chance of injury, they help to develop the animal's chute confidence from the start."

**JAY DAUGHERTY** | EXECUTIVE DIRECTOR  
AMERICAN BUCKING BULL, INC.



## BUCKING CHUTE SETS

Available in right or left delivery, Priefert offers sets of 2, 3, and 4 bucking chutes joined together. With the appropriate lift, each set can be moved as one unit.



ITEM NUMBER	DESCRIPTION
BC2LR	Set of 2 Left Delivery Chutes
BC2RR	Set of 2 Right Delivery Chutes
BC3LR	Set of 3 Left Delivery Chutes
BC3RR	Set of 3 Right Delivery Chutes
BC4LR	Set of 4 Left Delivery Chutes
BC4RR	Set of 4 Right Delivery Chutes



## STAIRS & HANDRAILS

Our stairs are designed to attach to the folding platform on the back of Priefert Bucking Chutes by simply hooking them over the rail on the platform. These stairs feature four steps and are constructed from sturdy 14 gauge Diamond Plate Steel. Our Hand Rail will attach to either the left or right side of the stairs by simply sliding into receivers on the stairs. These are secured in place with a bolt through each attachment point. Stairs and Handrails are sold separately as individual components.



OPTIONAL STAIRS AND HANDRAIL  
BCPS | STAIRS BCSHR | HANDRAILS

## ARENAS & Arena Accessories

Whether you decide on one of Priefert's pre-configured arena designs or choose to work with Priefert's expert consultants to build a custom arena layout to fit your specific needs, Priefert Arenas and Arena Accessories are safe, durable, and attractive. Thanks to an unmatched reputation for quality and innovation, Priefert is proud to be the Official Arena Equipment of two of rodeo's biggest events - RFD-TV's The American and the Wrangler National Finals Rodeo. You'll also find Priefert Arenas in some of the top rodeo and equestrian facilities across the country, like the Lazy E Arena and the Priefert Pavilion at the South Point Arena and Equestrian Center. From the simplest riding arena to the toughest rough stock arena, or anything in between, Priefert Arenas are the trusted choice.

## 90° TURN KIT

This kit creates the last turn that directs animals from the crowding or loading alley into the bucking chute. It is universal, allowing it to be used on either end of the chute. The three components that make up this kit are constructed from heavy duty, sheeted Rough Stock Panels, and feature an Architectural Grade Powder Coat Finish. Please note that a Rough Stock Alley Frame (sold separately) is required for the proper setup and function of our 90 Degree Rough Stock Turn.



BUCKING CHUTE 90° TURN KIT

## CRASH PADS

Priefert's Bucking Chute Crash Pads are designed to fit over the roll gate hood. An 8" Extension Pad is available to provide additional protection over the top portion of the roll gate. These pads are constructed from heavy duty foam with a durable vinyl covering and attach to the chute using industrial strength Velcro. Each pad is sold separately.



SCPBC  
STANDARD  
CRASH PAD  
*Fits over roll gate hood*



SCPE  
8" EXTENSION  
CRASH PAD





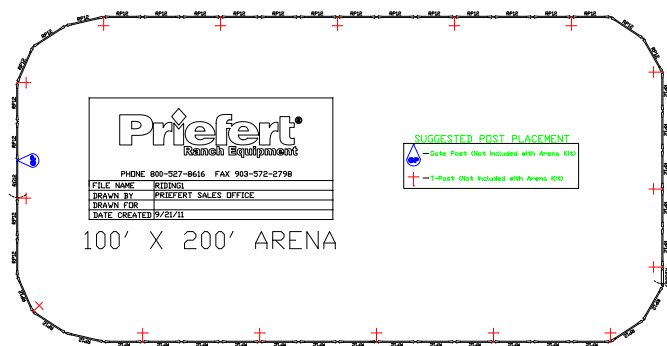


## PRIEFERT HAS CREATED SOME OF THE MOST HIGH PROFILE ARENAS IN THE COUNTRY!

Part of the benefit of providing "The Official Equipment" to organizations like the PRCA and PBR is the knowledge of just what kind of arenas are needed by the top sanctioning bodies in the industry. Priefert routinely works hand-in-hand with many of the most prominent competition organizers and top arena facilities in the country. Couple that with the fact that many of the top professional cowboys use Priefert for their practice arenas, and it just makes sense to utilize our experience and expertise to help design the perfect arena for you.

### RIDING ARENAS

Priefert's Riding Arenas are ideal for a number of disciplines, providing a safe and attractive area for riding and practicing. Our standard Riding Arenas are 100' wide by 200' long and include a single 12' gate, as well as a 6' x 9' bow gate. This arena layout is available in three different panel options: Economy, Utility, and Premier.



ITEM NUMBER	PANEL TYPE	COLOR	PANEL HEIGHT
RIDING1	Economy	Green	65"
RIDING2	Utility	Brown	62"
RIDING3	Premier	Grey	64"

"Priefert does an extensive amount of research prior to developing and manufacturing their products. Their products are very durable and safe for contestants and livestock. Their design and efficiency is among the best in the world and their personnel are very professional and easy to work with. I would highly recommend them to anyone."

### SHAWN DAVIS



GENERAL MANAGER  
WRANGLER NATIONAL  
FINALS RODEO

"Priefert boasts over 1,000,000 sq. ft. of manufacturing under roof in their plant in Mt. Pleasant, Texas. They ship steel panels and gates to customers all over the globe... Yet dealing with them from a business standpoint is like dealing with a mom and pop shop around the corner in small town America. They value 'The Relationship' first and foremost and their integrity is unsurpassed. Priefert's product quality is only exceeded by the concern they have for each and every customer they serve."

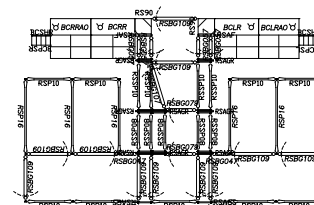
### TODD BARDEN



SENIOR DIRECTOR OF  
BUSINESS DEVELOPMENT  
LAZY E ARENA

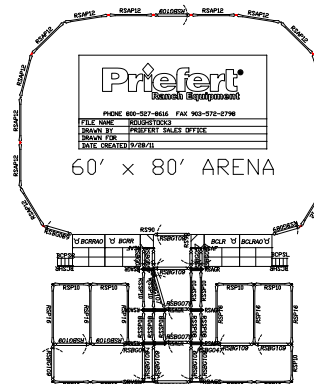
## ROUGH STOCK ARENAS

Whether you need an arena for riding broncs or bulls, Priefert Rough Stock Arenas are trusted by the pros. Time and time again, our rough stock equipment has been chosen by industry leaders for its ruggedness, reliability, and innovative features. We offer a variety of rough stock arena kit options or you can work with the pros at Priefert to design a custom layout.



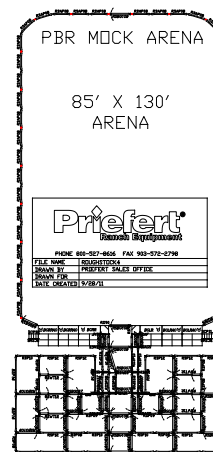
### ROUGH STOCK SETUP KIT

Priefert's Rough Stock Setup Kit is ideal for turning your existing arena into a rough stock arena. Available in either a 4 or 6 Bucking Chute setup, this kit includes a corresponding number of holding pens and chutes, along with a 10' sorting alley, and stripping chute. These kits do not include an arena.



### ROUGH STOCK PRACTICE ARENA KIT

The 60' x 80' arena is constructed from 12' Rough Stock Arena Panels with 3 Rough Stock Bow Gates for easy access for pickup men or staff. It features a total of 4 Bucking Chutes, and includes a Rough Stock Stripping Chute setup and four 10' x 16' holding pens. The 10' wide sorting alley is also constructed from Rough Stock Panels with 9' tall bow gates to allow for horseback access.



### PBR-STYLE ARENA KIT

This arena setup is identical to the one used by the PBR for their events. The 85' x 130' arena is constructed from 8' Rough Stock Arena Panels with 8' bow gates on either side of the chutes to allow quick entrances and exits for cowboys and other personnel. It features a total of 6 Bucking Chutes, and includes a Rough Stock Stripping Chute setup and a complete set of back pens. The 10' wide sorting alley offers 9' tall bow gates to allow for horseback access.

"When you are in the business of putting 2,000 lb. bucking bulls who jump, kick, and charge in venues filled with thousands of spectators, you had better be sure your arena system is tough and dependable. Priefert Roughstock Arenas transport efficiently, assemble quickly and easily, and most importantly, give us the peace of mind that our fans and athletes will stay safe on every out."

SEAN GLEASON | CHIEF EXECUTIVE OFFICER  
PROFESSIONAL BULL RIDERS

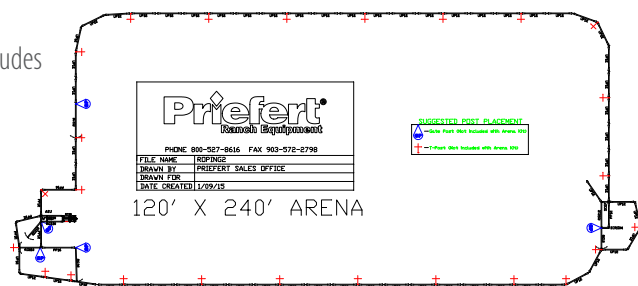


# ROPING ARENAS

Priefert offers a wide variety of pre-configured roping arenas designed for today's roper. Each of these arenas can be customized to fit your specific needs.

## BASIC ROPING ARENA

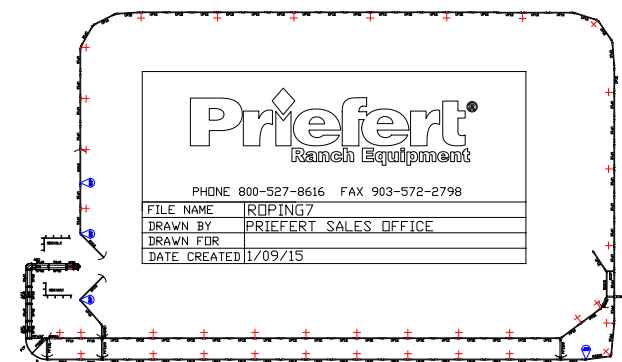
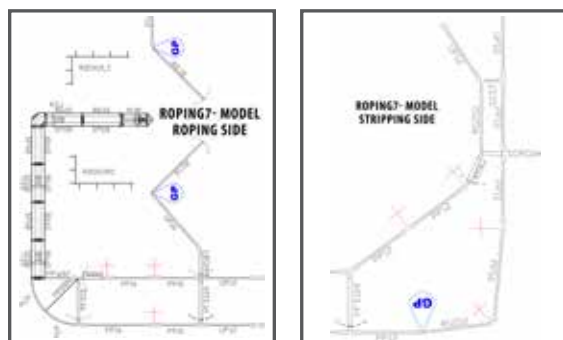
This "Bare Bones" 120' x 240' arena is our most basic roping arena design. It includes the RC98M and is available in your choice of Economy Panels or Utility Panels.



ITEM NUMBER	PANEL TYPE	COLOR	PANEL HEIGHT
ROPING1	Economy	Green	65"
ROPING2	Utility	Brown	62"

## ROPING ARENA W/ 10' RETURN ALLEY

This 150' x 250' arena design includes the RC98M, a 10' wide return alley, and is available in your choice of Utility, Premier, or Rough Stock Arena Panels.

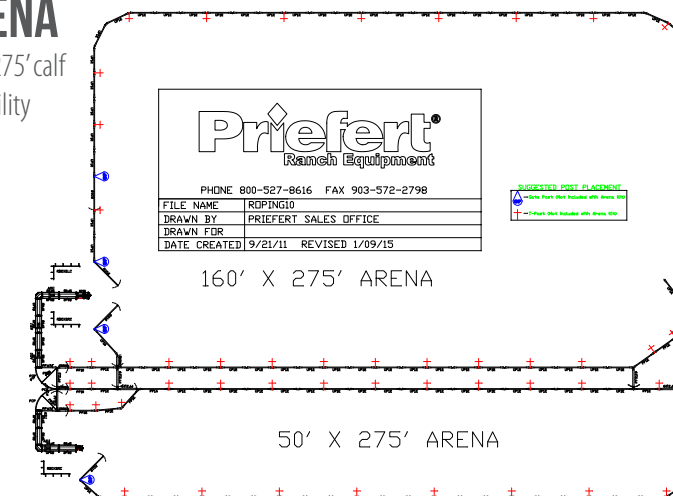
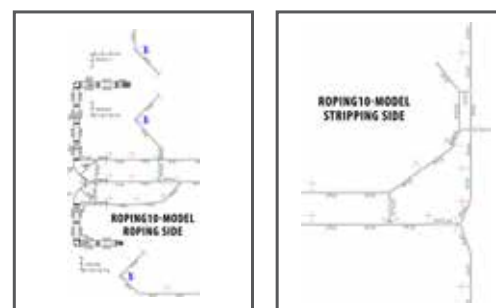


ITEM NUMBER	PANEL TYPE	COLOR	PANEL HEIGHT
ROPING7	Utility	Grey	62"
ROPING8	Premier	Grey	64"
ROPING9	Rough Stock	Grey	72"



## SIDE-BY-SIDE TEAM & CALF ROPING ARENA

This side-by-side setup features a 160' x 275' team roping arena and a 50' x 275' calf roping arena with a shared alley. The layout is primarily constructed from Utility Panels, with high stress or crowding areas constructed from Premier Panels.



While the idea of having your own roping arena is appealing, the thought of designing and building it is often a daunting one. Not to worry, this is where the experts at Priefert Direct can help you out. We offer free livestock flow consulting and design, and we'll even create a CAD diagram to help ensure that you get the perfect arena layout to meet your needs. Best of all, we'll ship your new arena directly to your local Priefert dealer.



"Simply put, using Priefert products makes our job easier at the events. Their attention to quality and safety make it easy on both the crew and livestock. Whether we are running 1,400 runs a day at an event, or my family makes 60 runs a day in the practice arena, I know I can count on Priefert equipment."

**TOM WINSOR** | SENIOR VP OF MERGERS AND ACQUISITIONS  
USTRC- ACTIVE INTEREST MEDIA

"We have used Priefert roping equipment at our various team roping events for over 25 years. We have the ultimate confidence through hundreds of thousands of cattle runs there will never be a problem. So on a personal level...just wouldn't think of using anything else."

**DENNY GENTRY** | PRESIDENT  
Priefert WORLD SERIES OF TEAM ROPING

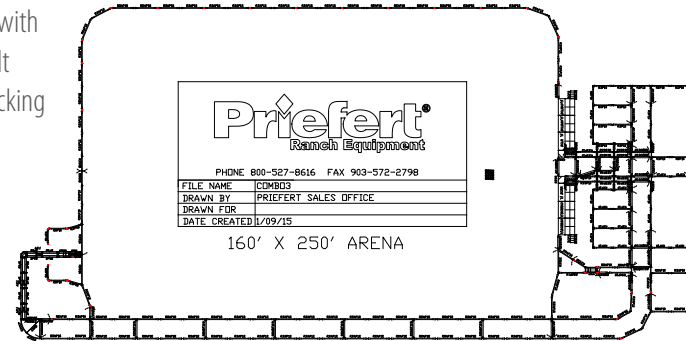
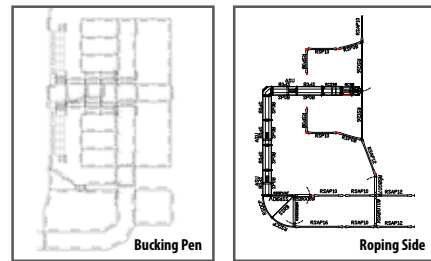


# COMBINATION ARENAS

Priefert's combination arena kits are designed to handle rough stock and timed events at the professional level. As with our other arenas, we offer a variety of pre-configured options or we can work with you to design a layout specific to the needs of your event or facility.

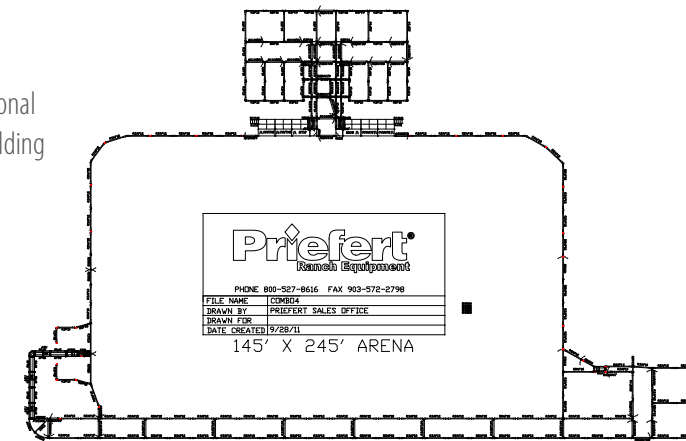
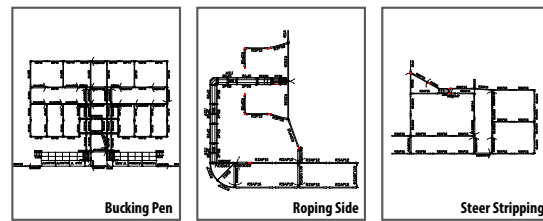
## COMB03 160' X 250' ARENA

This classic combination arena kit features a 160' x 250' arena with a timed event and rough stock event setup on opposite ends. It includes holding pens, an RC98M Manual Roping Chute, 6 bucking chutes, a 10' return alley, and stripping chutes.



## COMB04 145' X 245' ARENA

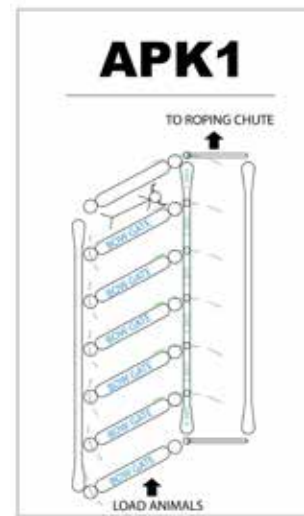
This combination arena kit features a 145' x 245' arena with 6 bucking chutes set on the long side of the arena with a traditional timed event setup at the end. It includes a 10' return alley, holding pens, stripping areas, and an RC98M Manual Roping Chute.



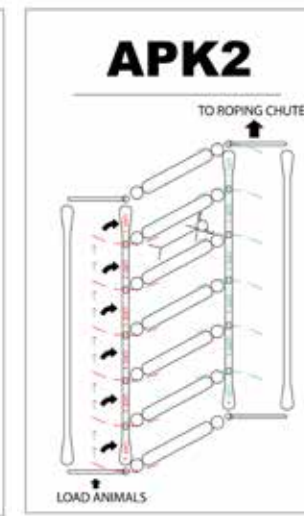
# ARROW PENS

Arrow Pens allow you to pre-sort and stage your timed event cattle to ensure that your event moves along without delays. Our single-sided arrow pen kits feature the ability to stage 6 steers or calves with your choice of an inside loading setup or an outside alley loading setup, while our double-sided kits offer you the same options with 12 animals.

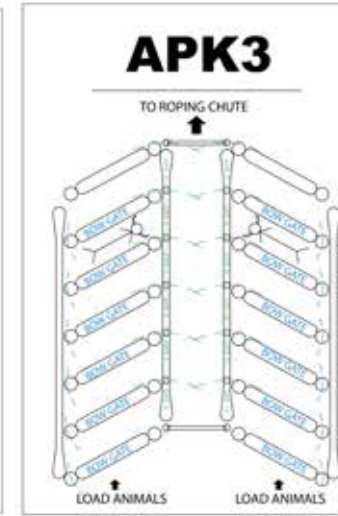
Single Sided with inside load



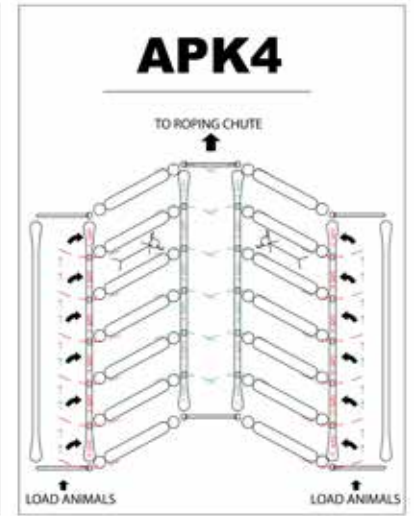
Single Sided with Outside load



Double Sided Kit with Outside load



Double Sided Kit with inside load



"I am so glad that we decided to use Priefert Arrow Pens at our new facility. It makes it quicker and easier to load the proper animal according to the stock draw/order of competitors. Besides making our job more efficient, what I like the best is how calm it keeps our cattle, which allows them to perform better."

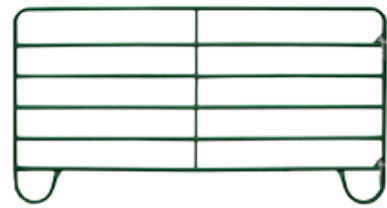
**STEVEN MONEY** | RODEO DIRECTOR  
SPANISH FORK FIESTA DAYS

"Priefert sets the standard for quality with Farm, Ranch, & Rodeo Equipment. The world's richest one day rodeo - THE AMERICAN, has run flawlessly due to the quality Priefert equipment we use. We utilize a full line of their rodeo equipment from holding pens, bucking & roping chutes, to loading chutes for the livestock. We rely on Priefert to execute rodeo's biggest one day event every year."

**SEAN CASSIDY** | VP OF WESTERN LIFESTYLE SALES & EVENTS  
RFD-TV



# PANELS

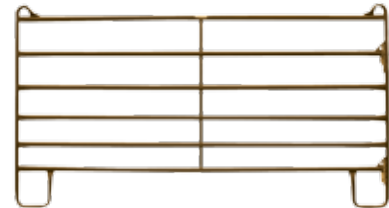


## ECONOMY PANELS

Priefert's most affordable panel option for the equine owner, Economy Panels stand 65" tall. Its loop legs, a single piece vertical stay, and chain connectors enhance safety for horses that accept confinement. It also features an Architectural Grade Powder Coat Finish.

**Available in 6', 10', and 12' lengths \***

*\*Panels are 4" shorter than stated length*



## UTILITY PANELS

Priefert's #1 Horse-Safe Panel, the Utility Panel stands 62" tall. It features a J-leg frame with a fishhook top and chain connectors to eliminate leg traps and enhance safety. The single-piece drilled stays add strength and the powder coat finish adds longevity.

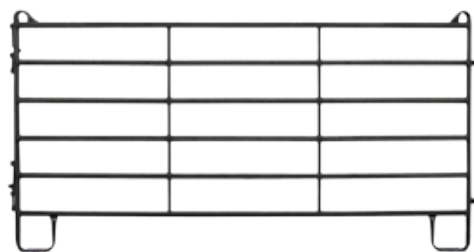
**Available in 10', 12', and 16' lengths**



## PREMIER PANELS

"Tough Enough for Cattle, yet Safe Enough for Horses," the Premier Panel stands 64" tall. Offering the same great horse-safe features as the Utility Panel, Priefert's Premier Panel is constructed from Quadraform™ tubing, increasing strength and flexibility.

**Available in 6', 8', 10', 12', 14', and 16' lengths**



## PREMIER TALL PANELS

The Premier Tall Panel is basically the "big brother" to Priefert's popular Premier Panel. This panel features two key differences; it is 72" tall and uses our rodeo pin connectors. These panels can pin together with Priefert Rough Stock items.

**Available in 12' lengths**

## PANEL ACCESSORIES

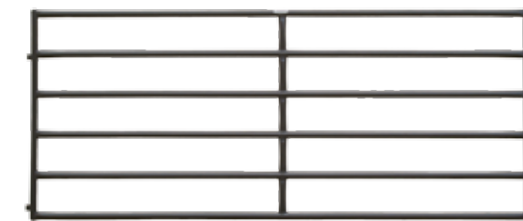
For each panel line, Priefert offers a variety of accessories, including Walk Thru Panels and Bow Gates. Walk through panels include a 4' gate to provide easy "walk thru" access into pens or corrals. Our bow gates include 9' bow frames to allow for easy "ride thru" access. These accessories make it easy to build round pens, paddocks, arenas, and more.



## ROUGH STOCK ARENA PANELS

Rough Stock Arena Panels are built to withstand whatever may challenge them, and are a great choice for a first class, attractive, durable arena perimeter or set of pens where 6' height and superior strength are needed. Constructed from 2" OD 16 gauge tubing, these panels are ideal for permanent corrals because they are engineered to handle the high stress crowding of even the rankest stock. Rough Stock Arena Panels feature straight legs with closed ends and no sharp edges.

**Available in 8', 10', 12', 14', and 16' lengths**

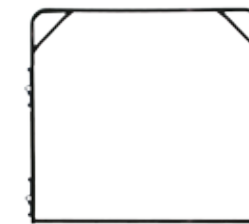


## ROUGH STOCK PANELS

These are Priefert's heaviest, most durable panel and are ideal for use in crowding lanes in cattle systems, in rodeo back pens, or wherever uncooperative cattle are moved. Constructed from 2" OD 14 gauge tubing, Rough Stock Panels require connector posts. When used with our standard Rough Stock Connector Posts, these panels stand 6' tall. These panels may also be connected directly to Rough Stock Alley Frames and Alley Gates.

**Available in a wide variety of lengths**

## PANEL ACCESSORIES



### BOW FRAMES

Available in multiple configurations, these heavy duty bow frames provide strength and support to alleys and crowding lanes.



### BOW GATES

Available in a variety of sizes, Priefert Bow Gates provide support and secure access to holding pens, arenas, and alleys.



### ALLEY GATES

Priefert offers a sliding and a swinging alley gate option to serve as blocking gates in lead up alleys and access gates for personnel.

## ROUGH STOCK CONNECTOR POSTS

Available in multiple connection configurations, these posts are designed for use with Priefert's Rough Stock Panels and Gates



### BOW FRAME EXTENSIONS

Available in a variety of lengths, these extensions raise the height of a bow frame to allow greater clearance for tractors or other equipment.



### ROUGH STOCK GENDER ADAPTORS

Available in 2, 3, and 4-way connections, the adaptors allow for joining male pin connector ends of Rough Stock Panels.

"Priefert quality and workmanship is second to none. Extensive amounts of research and design are evident in each and every one of their products, and there is never any question as to whether those products can stand up to the abuse of being set up week after week on tour, or the wear and tear of thousands of bucking bull outs that they see each year. With Priefert, we know we are getting the safest, most rugged, and highest quality product on the market."

**DAN HICKMAN** | VICE PRESIDENT OF OPERATIONS & EVENT PRODUCTION, PROFESSIONAL BULL RIDERS



## ARENA MASTER

Priefert's ArenaMaster™ eliminates expensive hydraulics and allows operators to break packed ground, pulverize clumps of dirt, and leave consistent footing; often in a single pass. Offset rows of S-tines provide multiple points for ground breaking efficiency. The leveling bar aids in breaking clods, leveling high spots, and filling in holes. The trailing "Clump Buster" further pulverizes dirt clods and packs the sub-surface for consistent footing; it also fluffs the top layer of dirt to ensure a smooth surface, suitable for any practice or competitive arena. The heavy "Push/Drag" box blade can be used in the "down" position to push dirt when the tractor is in reverse, which comes in handy for back-filling roping boxes or moving dirt into corners or other hard-to-reach places.



**Product #: AG06 (6') | AG08 (8')**

## LAND GRADER

Priefert's Land Grader is the ideal tool for dirt and gravel road maintenance. Designed for turning, mixing, shifting, and leveling dirt and/or gravel, the Land Grader has two forward-cutting blades mounted on a sturdy, high grade steel frame with runners and side pans. This 8' wide grader features a 3-point mount to attach to any Category I Tractor.

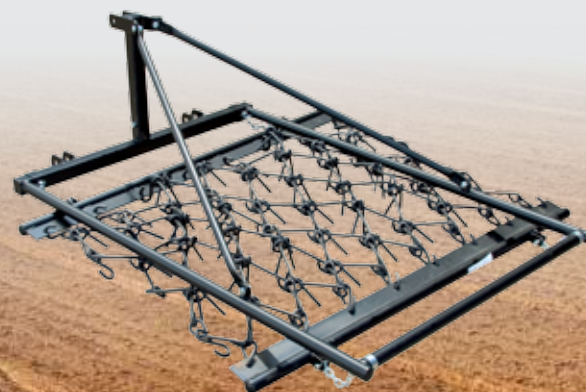


**Product #: PLG08**

## CHAIN HARROWS

Priefert Chain Harrows with Lift Kits easily attach to your tractor's 3-point connection, giving the operator maximum control. Ideal for light duty arena grooming, the harrow mat is constructed from heavy, durable, high carbon, heat-treated steel. Each digging tine is 4" long, and the 1/2" chain-style mat features a "double tine" design. The Draw Bars and Lift Kit feature an Architectural Grade Powder Coat Finish with UV inhibitors to add years of life to your investment by helping the product resist rust, scratches, and fading.

ITEM NUMBER	MAT SIZE	WEIGHT
PICH44LK	4' X 4'	208
PICH46LK	4' X 6'	328
PICH48LK	4' X 8'	343
PICH412LK	4' X 12'	413



## EXPO STALLS & Livestock Pens

From equestrian events to cattle shows, rodeos to livestock shows involving sheep, hogs, or goats, Priefert offers products to help make your event run safely and efficiently, while also creating an attractive and professional-looking facility. From the horse stalls at the Ohio Expo Center, home of the All-American Quarter Horse Congress, to the cattle barns of the Will Rogers Memorial Center in Fort Worth, Texas, Priefert Livestock Handling Equipment is used to house and showcase some of the most elite equestrian athletes and livestock animals in the country. With a variety of options to choose from, the expert team at Priefert offers free livestock flow consulting and CAD diagrams to ensure that our equipment is best utilized to fit your specific needs.





## EXPO STALLS

Priefert Expo Stalls are used to house some of the most elite horses in the world during major events and competitions. Attractive and easy to install, these stalls can be found at America's premier fairgrounds, exposition centers, race tracks, and equestrian centers, including facilities like the 3000 stall Super Barn in Oklahoma City, the Will Rogers Complex in Fort Worth, and the Tulsa Expo Center. Each stall is built to a strict standard for safety and durability. These stalls are constructed from 16 gauge steel and feature an attractive black powder coat finish to help the stall resist rust, scratches, and fading, adding years of life to your investment. No tools are required for assembly. Our stall fronts and panels join using simple pin connectors which are attached to each component. A starter post is required for stall setup when you are not connecting to a wall or other existing structure (starter post sold separately).



Priefert uses a unique poly blend, specially designed for horse stalls, which is available in your choice of .25" or .38" thickness. This modified HDPE blend has been tested to withstand repeated kicking from a horse. Our poly is colored all the way through, ensuring that the color remains the same despite scratches, making it an attractive option for facilities with heavy stall use. Additionally, this durable poly is easy to clean, making for quicker turnaround times between events. Priefert Expo Stall Fronts and Panels also feature a built-in fork well across the top of their frame, making it easier to move the components into place using a forklift or tractor.

## STALL FRONTS

Priefert Expo Stall Fronts are available with vertical or horizontal bar options and feature a 46" wide swinging door secured in place with a gravity latch.

Height 85" | Length (OD): 116.5" | Length (pin center to pin center): 115"



**EFV10PI**  
10' Expo Stall Front  
Vertical Bar Top



**EFH10PI**  
Expo Stall Front  
Horizontal Bar Top



**ESP22.4**  
Stall Starter Post  
2-way Connector

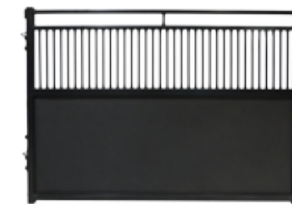


**ESP32.4**  
Stall Starter Post  
3-way Connector

## STALL PANELS

Our Stall Panels are available with vertical bar top, horizontal bar top, or a solid poly-fill.

Height 85" | Length (OD): 121" | Length (pin center to side female connector): 118.25"  
Length (pin center to end female connector): 120"



**EPV10PI**  
Expo Stall Panel - Vertical Bar Top



**EPH10PI**  
Expo Stall Panel - Horizontal Bar Top



**EPS10PI**  
Expo Stall Panel - Solid Poly Filled



## EXPO STALL CONVERSION KIT

DOUBLE STALL BARN CAPACITY  
FOR SMALLER LIVESTOCK



- Converts Priefert Expo Stall to two 5' x 10' pens
- Ideal for sheep, hogs, goats, & miniature horses
- Quick & easy installation
- Architectural Grade Powder Coat Finish
- Constructed from "D-shaped" tubing for strength & durability

- Lockable Slide Latch
- Adaptable to ANY 10' Priefert pin-style stall
- Includes name plate bracket
- Attaches to most major competitor pin systems



"We recently opened a new exposition center in Williamson County, Texas. In our multi-use space, we chose Priefert expo stalls because of their equine safety, durability and portability. Our customers continuously comment on the quality and attractiveness of Priefert stalls."

**CLINT CHITSEY** | GENERAL MANAGER  
WILLIAMSON COUNTY EXPOSITION CENTER



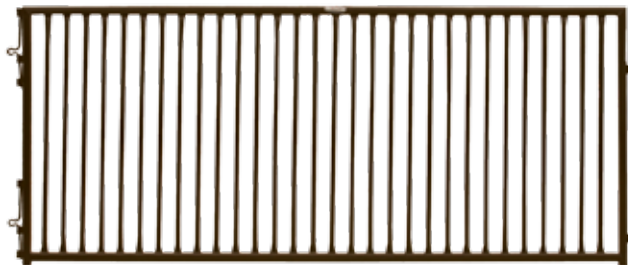
## SHEEP, HOG & GOAT

Ideal for exposition centers, fairgrounds, or home use, these panels are designed for the confinement of small livestock, such as sheep, hogs, and goats. These versatile panels allow for quick and easy setup. With vertical bars that are set on 4" centers, these panels discourage livestock from rearing up and finding a foothold, the way they often do with horizontal-rail panels. Priefert's Sheep, Hog, and Goat Panels are available in a variety of lengths and connect using sturdy pin connections. The Bow Gates feature a 6' Tall frame for convenient walk-thru access for exhibitors. These panels and bow gates are available with an Architectural Grade Powder Coat Finish or with a galvanized finish and clear powder top coat, which is great for areas with high humidity and salt-air conditions.

ALSO AVAILABLE IN GALVANIZED



ITEM NUMBER	DESCRIPTION	LENGTH	WEIGHT
SHBG04	4' Bow Gate	4'	53
SHBG05	5' Bow Gate	5'	68
SHBG06	6' Bow Gate	6'	78



ALSO AVAILABLE IN GALVANIZED

ITEM NUMBER	DESCRIPTION	LENGTH	WEIGHT
SHP04	4' Panel	4'	39
SHP05	5' Panel	5'	48
SHP06	6' Panel	6'	53
SHP08	8' Panel	8'	69
SHP10	10' Panel	10'	82

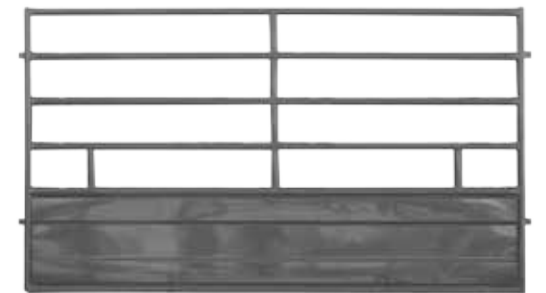


"We have purchased over 600 of the Priefert Sheep, Hog, and Goat pens and the consistency with Priefert products is remarkable. The universal pin connectors securely attach the panels together and provide a snug and perfect fit every time. The powder coat finish certainly makes it easy to clean after usage, which is a must for event centers and fairgrounds."

**ANDY MAHER** | GENERAL MANAGER  
WOODWARD COUNTY EVENT CENTER

## CATTLE TIE STALL PANELS

Priefert Tie Stall Panels enhance the versatility of any multi-purpose barn or expo hall. These portable, 72" tall Tie Stall Panels are designed to provide durable, secure tie locations for show cattle and other livestock. For stock shows, expo centers, or 4H/FFA barns, Priefert Tie Stalls offer a simple and effective means of providing temporary locations for livestock between show classes. These panels feature a heavy duty, fully-welded vertical stay to provide maximum strength and stability, and the sheeted bottom section acts as a bedding guard & provides maximum separation between livestock. An Architectural Grade Powder Coat Finish helps the product resist rust, scratches, and fading. Tie Stall Panels require Rough Stock Alley Frames for proper connection/installation.



ITEM NUMBER	LENGTH	WEIGHT
TSP08	8'	131
TSP10	10'	164
TSP12	12'	197



**RSAF**  
Height: 84"  
Width: 38"



**RSAF04**  
Height: 84"  
Width: 44"

Tie Stall Panels require Rough Stock Alley Frames for proper connection/installation.

"Our Priefert cattle tie stalling system has proven to be durable, easy to use and popular with our exhibitors at the Fort Worth Stock Show & Rodeo. Priefert's attention to quality is outstanding. They go the extra mile to understand our challenges then design and build products that are durable, useful, and complement our facilities."

**BRAD BARNES** | PRESIDENT & GENERAL MANAGER  
FORT WORTH STOCK SHOW & RODEO



## ROCK BOTTOM PANELS & ACCESSORIES

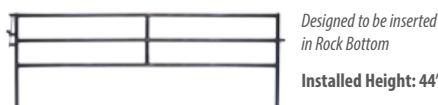
PRIEFERT IS PROUD TO OFFER A VARIETY OF PANELS AND ACCESSORIES DESIGNED TO WORK WITH ROCK BOTTOMS



### ROCK BOTTOM ARENA PANELS

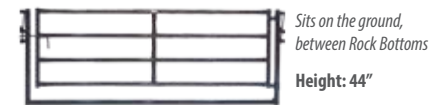
When used in an arena, Rock Bottoms help hold the dirt in the arena floor and prevent it from spilling out around the edges. Our Standard Rock Bottom Arena Panel and Arena Gate are perfect for use in building a show ring for small livestock or other events that don't require a containment height above 44" high. Our Rock Bottom Rough Stock Arena Panel should be used for building equine or rodeo arenas and provides a 72" containment height.

#### RBAP44 | RB ARENA PANEL



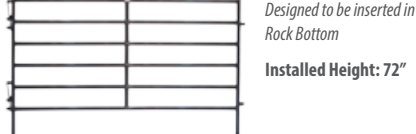
Designed to be inserted in Rock Bottom  
Installed Height: 44"

#### RBAG44 | RB ARENA GATE



Sits on the ground, between Rock Bottoms  
Height: 44"

#### RBAP72 | RB ROUGH STOCK



Designed to be inserted in Rock Bottom  
Installed Height: 72"

Designed for use with standard Rough Stock Arena Bow Gates

### ROCK BOTTOM TIE STALL PANELS

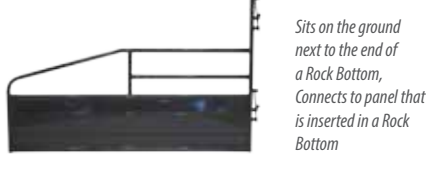
Rock Bottom Tie Stall Panels are designed to work with Rock Bottoms to create secure tie locations for show cattle and other livestock. We offer Tie Stall Panels and End Panels to construct a complete setup. Additionally, we offer banner pole extensions designed to make it easy to hang signage over the tie stalls.

#### RBTSPP | RB TIE STALL PANEL



Designed to be inserted in Rock Bottom  
Installed Height: 73"

#### RBTSPEP | RB TIE STALL END PANEL



Sits on the ground next to the end of a Rock Bottom, Connects to panel that is inserted in a Rock Bottom

#### RBTSPEP | RB BANNER EXTENSION POLE



Sold individually  
Creates a 19" extension over the panels on which to hang signage



## ROCK BOTTOMS

Rock Bottoms offer fairgrounds and expo centers the ability to build secure free-standing arenas, tie stalls, and other panel structures without drilling damaging holes into their concrete floors. Constructed from heavy duty molded plastic with a metal top and two metal sleeves, Rock Bottoms are designed create a sturdy base for a variety of panel needs. Their simplicity and ease of setup lead to lower labor costs and greater versatility for the facilities that use them. Priefert is proud to be a Preferred Reseller of Rock Bottoms!



### ROCKBOTTOM

Length (OD): 119"  
Sleeve Center to Sleeve Center: 115"  
Height: 13"  
Width: 12"

## LOADING CHUTE

Priefert's 12' Loading Chute provides a safe and effective way to load in or load out livestock. Adjustable locking support legs allow for various loading heights to ensure a safe loading/unloading experience with a variety of trailers. The cleated Rumber® floor provides added traction for livestock. The tow bar slides under the chute so that it is out of the way when you get read to load or unload.

### PLC12

Length: 156"  
Width: 30"  
Height: 104"  
Weight: 1655lbs  
2" Ball mount



## EXPO RACKS

Priefert Expo Racks are ideal for storing items like Priefert Expo Stalls when they are not setup for use. This rack is also great for storing our Sheep, Hog, and Goat Panels and Bow Gates, as well as Rough Stock Bow Gates and Rough Stock Panels without legs. The Expo Rack is designed with fork pockets to make it easy to move the rack of product from storage to setup area and back again. Keyhole openings are located bottom corners of the back of the rack to allow you to secure product to the rack for transport. Proper storage helps protect your products, minimize damages, and streamline inventory.



### EXPORACK

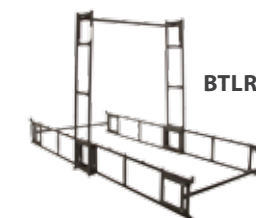
Width: 74.25"  
Height: 56.25"  
Storage Depth: 42.75"

## PANEL RACKS

Our Bolt Together Lean-to Racks eliminate the need to set posts in the ground to support a row of panels stored in the upright position. These racks are available in a single-sided or double-sided configuration and are the ideal way to store panels with legs. An additional height attachment is available to allow for storage of taller items, like bow gates. Once the rack is full, additional panels can be stacked on ground level.



BTLR



BTLR2



BTLRHA

PRODUCT #	DESCRIPTION	LENGTH	WIDTH	WEIGHT
BTLR	Single	75.5"	59"	179 lbs
BTLR2	Double	151"	59"	264 lbs
BTLRHA	Height Extender	1"	15"	49 lbs

"When your customers or fans see you with Priefert products, whether it's a rodeo, show, sale, or demonstration, it's obvious that your outfit has a commitment to providing a top-notch product, and it gives a great first impression for those viewing your event. Quality handling products and arenas expedite transitions during events, and ensure that every aspect of the show has a professional atmosphere which translates into better media exposure and future opportunities for growth."

## ROGER MOONEY | PRCA RODEO ANNOUNCER





# PONDEROSA FENCE

Priefert Ponderosa wood post fence combines the aesthetic look of the western lifestyle with the quality, durability, and convenience of a no-weld powder-coated steel fence. The rails begin with galvanized metal and are then powder coated to create two layers of protection against the elements, ensuring a long-lasting fence. Our wood posts are pressure treated after all the holes are drilled to ensure the longevity of the wood\*. The posts features domed tops for safety and water shed. Priefert's unique rail-in-rail swedge design allows the fence to flow with the contour of your land, while also allowing the fence to expand and contract without buckling in extreme temperatures. Livestock-safe, this fence offers the strength of steel for confinement with no sharp edges or barbs to injure animals or people. The Ponderosa is a great addition to any home, ranch, fairground, or expo center.



\*Natural Material Disclaimer: Ponderosa Fence posts are made from real wood. Because wood is a natural material, every post will have a unique appearance, often with naturally-occurring variations in color, texture, and grain pattern. All wood products will absorb and release moisture for a lifetime, leading to changes in color and possible cracking. This is a natural process over which Priefert Mfg., Inc. has no control. Due to the normal nature of this process, Priefert cannot be held accountable for any material that degrades due to these natural processes and does not accept returns or replacements on Ponderosa Wood Posts for these reasons.

EXPO & LIVESTOCK



"We have been using Priefert products for years. Their Ponderosa fence was a great choice for our Equestrian Center here at Oklahoma State University. It's been maintenance free, safe for our horses, and a beautiful addition to our facility."

**LARRY SANCHEZ** | EQUESTRIAN HEAD COACH  
OKLAHOMA STATE UNIVERSITY



Texas A&M University | College Station, TX



# Priefert Complex Designs

The Priefert Complex Designs (PCD) team has over 40 years of combined experience in building design and construction management. By utilizing resources from Priefert Farm, Ranch, and Rodeo Equipment, PCD offers extensive knowledge of animal flow and livestock handling in a variety of facilities. This makes PCD **uniquely qualified to meet the challenges of designing multi-purpose facilities** that are specifically related to livestock, fairgrounds, and equestrian-focused activities. By solving potential problems regarding livestock flow before construction begins, PCD can **reduce costly delays and maximize project efficiencies**, while ensuring a safe environment for animals, participants, and spectators. Priefert Complex Designs... Offering Simple Solutions for Complex Designs.

Expo Center of Taylor County | Abilene, TX



# Priefert<sup>®</sup>

## COMPLEX DESIGNS

Priefert Complex Designs (PCD) was founded to provide professional architectural, structural, and civil engineering services to a variety of clients. Recognizing a void of practical experience in designing livestock-related venues, PCD has focused on providing valuable insight and proficiency in facility design and equipment for private venues, fairgrounds, multi-purpose expo centers, and universities. Often working with other engineers and architects who may be focusing on aesthetics or other layouts of the building projects, PCD offers solutions for efficient flow of livestock and people before construction begins. Cost-effective, accurate budgeting develops economically feasible facilities that are aesthetically pleasing and safe for animals, participants, and spectators alike. PCD prides itself in “maximizing value” using practical designs to create quality environments.

*Combining creativity and insight for livestock related venues & offering economical, practical solutions for America's Fairgrounds.*

“When we began planning and construction of the new equine complex at Texas A&M, we elected to utilize the experience and expertise of Priefert. The overall experience and knowledge they have in design and manufacturing is unequaled in the industry. Glen Calvert is a talented and knowledgeable designer; his team worked hand-in-hand with our architects and contractors to make their part of this project uncomplicated. They not only promise a good product, they deliver. I would recommend them to anyone.”

### DR. JAMES HEIRD

**GLENN BLODGETT EQUINE CHAIR  
EXECUTIVE PROFESSOR &  
COORDINATOR EQUINE INITIATIVE  
TEXAS A&M UNIVERSITY**

“Southern Arkansas University became involved with Priefert Complex Designs at the beginning of the design phase for our facility, Story Arena. The commitment and professionalism of the Priefert staff is unequaled in the construction and design of livestock facilities. They understood what we wanted and needed in the design, construction and fiscal constraints in building a multi-purpose arena. The working relationship we developed with the Priefert team is invaluable to this day.”

### RUSTY HAYES

**SOUTHERN ARKANSAS  
UNIVERSITY RODEO COACH  
INSTRUCTOR OF AGRICULTURE  
DIRECTOR OF FARM OPERATIONS**

Texas A&M University | Commerce, TX



Southern Arkansas University | Magnolia, Ark

**Multi-Purpose Venues  
Equestrian Facilities • Fairgrounds  
Event Centers • Rodeo Arenas**



## 7P DESIGN STRATEGY

PCD offers professional guidance to help you define the **Purpose** and the **Place** with a **Plan** at a **Price**. PCD provides a **Picture**, strategies for **Phasing**, and a clear **Process** to bring your vision to fruition.

## PCD SERVICES INCLUDE

Master Planning • Facility Design • Consulting

“The Expo Center of Taylor County hired Priefert Complex Designs to help us put our dreams on paper. PCD met with our committees and staff numerous times over the course of a year to design two new facilities and modify a third. We had to take into consideration both stock shows and rodeos along with many team ropings, barrel races, stock horse shows and cuttings. PCD worked very efficiently and economically, designing buildings that will not only modernize our facilities, but will take us forward many years. We recommend PCD to everyone thinking of livestock and equestrian facilities.”

**ROCHELLE JOHNSON** | MANAGER | TAYLOR COUNTY EXPO CENTER

# Why Priefert®?

For over 50 years, Priefert has been "America's #1 Name in Farm, Ranch, & Rodeo Equipment." What sets Priefert apart from others in the industry? We strive to offer **unmatched customer service**, and our **intense focus on quality, innovation, and safety** creates a product line that is **engineered to last**. Pound for pound, dollar for dollar, Priefert provides the best value on the market.  
**But don't take our word for it...**



"Priefert's quality and attention to detail speaks for itself. It's the longest lasting and easiest to use equipment on the market."

**TREVOR BRAZILE** | 23X WORLD CHAMPION COWBOY



"Priefert consistently delivers a durable and safe product combined with the functionality our clients and exhibitors expect at each and every event. The quick and easy assembly has drastically reduced our labor cost associated with event preparation."

**ANDY MAHER** | GENERAL MANAGER  
WOODWARD COUNTY EVENT CENTER



"For Safety, for Quality, for Ease of Use, and for Durability, I've seen them all... Nobody can compare to Priefert on those terms. Priefert never stops trying to make it better, and their bar is already unbelievably high."

**BOYD POLHAMUS** | 4X PRCA ANNOUNCER OF THE YEAR



"I believe the reason the Priefert family has been so successful is their attention to quality and animal safety. This company does not just make these products; they live these products in their everyday life so they know what their customers need and expect. Furthermore, they stand behind their products better than anyone else does."

**RYAN GROWNEY** | GENERAL MANAGER  
SOUTH POINT HOTEL



"When I go to an event that has a Priefert system, it makes all the difference in how the production flows. I know it's going to be smooth because of Priefert's design. They are light years ahead of any other product by the quality of steel used, in safety, and in design. Have the best, you'll be the best, and Priefert is the best."

**BOB TALLMAN** | 6X PRCA ANNOUNCER OF THE YEAR