

Q36 Solar Box

Installation Instructions



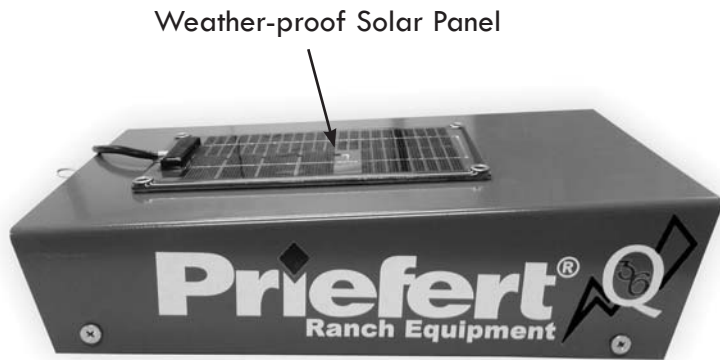
Priefert[®]
Ranch Equipment

www.priefert.com 800-527-8616

IMPORTANT: Battery must be connected for operation! Remove cover to connect power supply.
See page 4 of Assembly Instructions.

Table Of Contents

Product Identification	01
Features	02
Parts List	02
Tools Needed	02
Q36 Installation	03
Step 1 - Install Release Bracket	03
Step 2 - Install Spring/Spring Attachment	03
Step 3 - Install Return Handle Brackets	03
Step 4 - Install Control Box	04
Step 5 - Installation Complete	04
Step 6 - Programming Additional Remotes	05

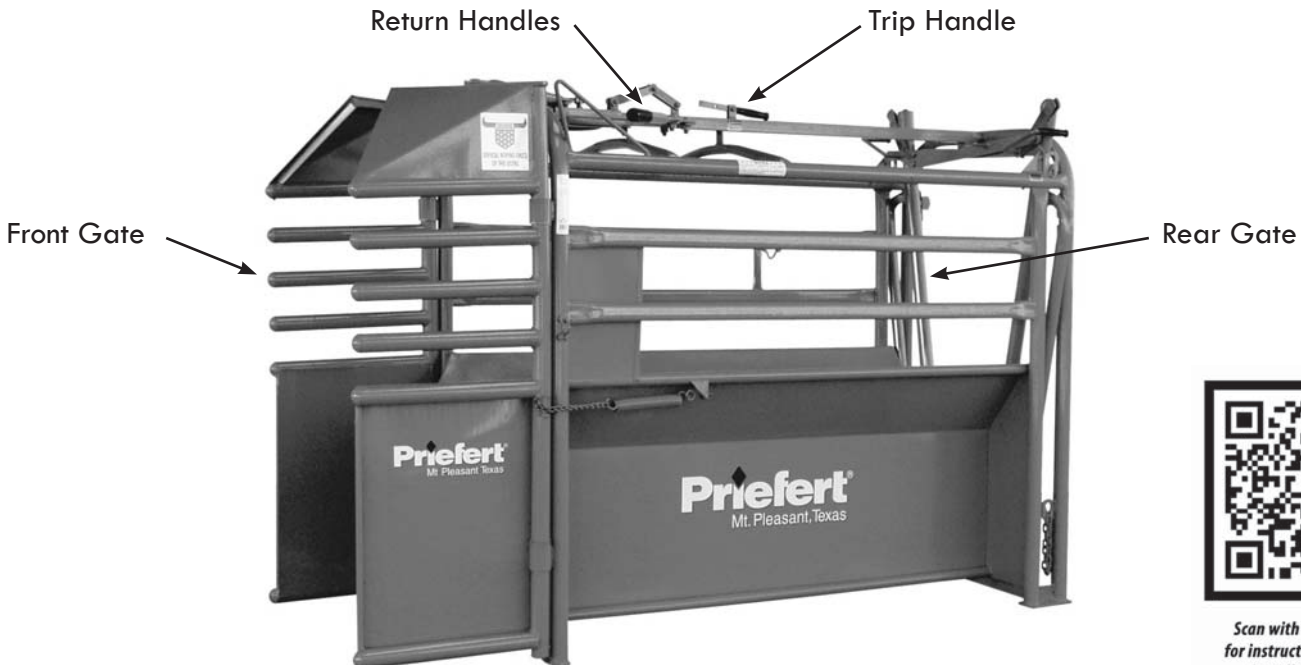


Q36 Solar Box
Q36



Q36 Remote Control
TRANSQ36

NOTE:
Remote is packed inside Q36 Solar Box for shipping.



RC98M Part Identification



Scan with Smart Phone for instructions on how to install Box to your current Chute

If you have questions or comments, please call:

Customer Service
1-800-527-8616
903-572-1741

Web-site address:

www.priefert.com **or** sales.priefert.com

For further assistance write to:

Priefert Manufacturing
Attention: Customer Service
2630 South Jefferson
P.O. Box 1540
Mount Pleasant, Texas 75456-1540

Features

- Fits Any Priefert RC98M!
- Requires no electrical cords or air lines, just the sun!
- Battery backup allows operation NIGHT or DAY!
- The Solar Panel is weather proof, highly efficient and virtually indestructible.
- Utilizes the latest patented high frequency pulse technology.
- Equipped with a battery backup that will allow it to operate in the event that there is no sunlight to recharge the unit.
- A single button remote control automatically opens the chute's front release gate.

Parts List

Q36 Control Box with Cover
(1 ea)

- 1 - Q36 Enclosure
- 1 - Q36 Box Lid

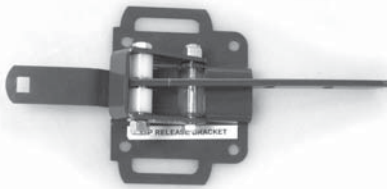


Remote
(1 ea)
TRANSQ36



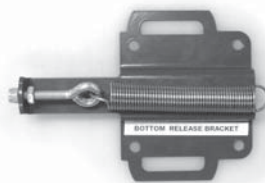
Release Bracket Spacer
(2ea)

- 2 - S1601.69004.75-P



Top Release Bracket (1 ea)

- 1 - S1007.19008.38-P
- 1 - S1001.00008.5-P
- 2 - NB12.75
- 2 - FB062.75ZPG2
- 2 - FN06NYLN
- 2 - S1601.69004.75-P



Bottom Release Bracket (1 ea)

- 1 - S1007.19008.94-P
- 1 - FM05EB
- 1 - FN05NYLN
- 1 - FN0632
- 1 - SP110



Return Handle Brackets (2ea)

- 2 - S1001.63013.25P
- 2 - Q36HB
- 4 - FN06NYLN
- 2 - FB061.25ZPG2

Spring Bracket
(1 ea)

- 1 - Q36SB
- 1 - FN06NYLN
- 1 - FB061.25ZPG2



Handle Bolts & Nuts
(1 pkg)

- 4 - FN10NYLN
- 4 - FB102.00ZPG5

Box Bracket (2ea)

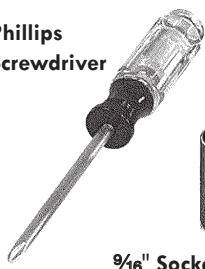
- 2 - RCF040.7503.25-P
- 4 - FN06NYLN
- 4 - FB062.50ZPG2

Release Bracket Bolts & Nuts
(1 pkg)

- 4 - FN06NYLN
- 4 - FB061.25ZPG2

Tools Needed

Phillips
Screwdriver

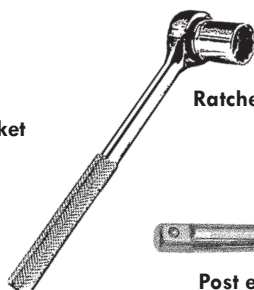


9/16" Socket

15/16" Socket



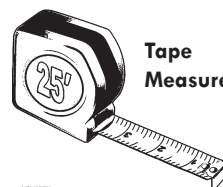
Ratchet



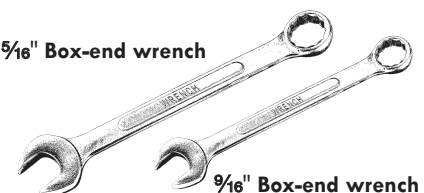
Post extension



Tape
Measure



15/16" Box-end wrench



9/16" Box-end wrench

Breaker Bar



Q36 Installation

Step 1 - Install Release Bracket

Start by pushing trip handle to release front gate.

Using the $\frac{9}{16}$ " wrench, remove trip handle (See Fig 1). Save removed bolt & nut. Replace with Top Release Bracket, making sure top link is tilted back. Affix through rear-most hole with saved bolt nut.



Fig 1 - Remove Trip Handle

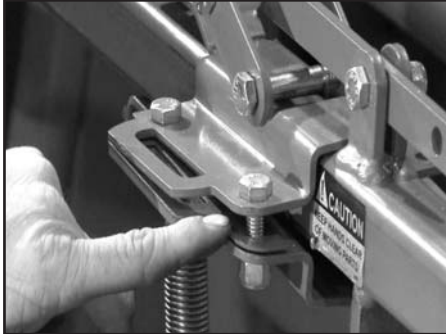


Fig 2 - Spacers

Using the $\frac{9}{16}$ " socket and $\frac{9}{16}$ " box-end wrench, attach Top Release Bracket and Bottom Release Bracket together with the Release Bracket Bolts and Nuts. Be Sure to include the Spacers between the Top and Bottom Brackets (See Fig 2). Tighten all connections securely.

Step 2 - Install Spring/Spring Attachment

Locate and install the Spring Release Bracket, just below and forward of, the Release Brackets previously installed (See Fig 3). **Note that the spring attachment link faces toward the rear of the chute.** Affix with Bolt & Nut and tighten securely. Attach spring from Bottom Release Bracket (See Fig 4). Check Bracket/Spring for free operation.

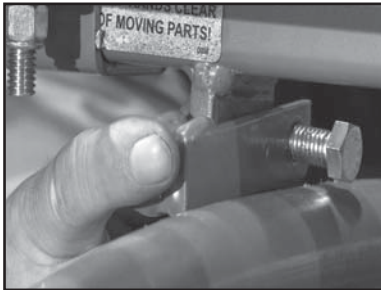


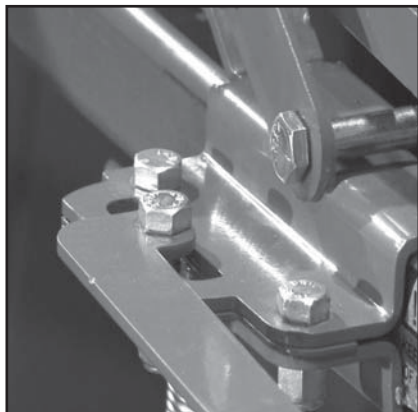
Fig 3 - Spring Release Bracket



Fig 4 - Attach Spring

Step 3 - Install Return Handle Brackets

Using the $\frac{15}{16}$ " socket & Breaker Bar, remove the bolts holding the manual gate-closing handles and discard the bolts & nuts used to attach them. Attach the Return Handle Brackets over the gate-closing handles. The oblong plate will locate on top of the gate-closing handle, and, ears of bracket arms will face inward (See Fig 5). Use the provided 2" Handle Bolts & Nuts and snug enough to allow movement.



NOTE: DO NOT OVER-TIGHTEN as this will prevent the forward/backward movement of the handles.

Attach other end of Return Handle to the slot in the Release Bracket installed earlier (See Fig 6). Using the $\frac{9}{16}$ " socket & Breaker Bar, SNUG bolt & nut enough to allow movement, but **DO NOT OVER-TIGHTEN.**

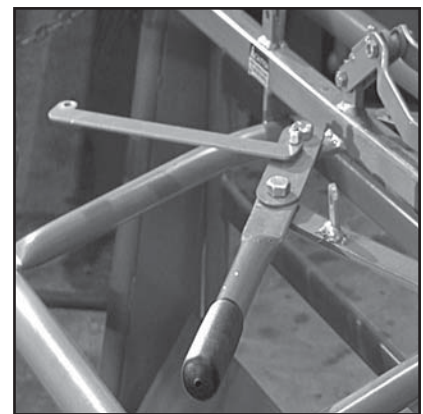


Fig 5 - Gate-Closing Handles

Fig 6 - Attach Return Handle to Release Bracket

Step 4 - Install Control Box

Find and remove 4 screws from the Cover of the Q36 Control Box (See Fig 7). Place Control Box on top rail of chute just behind Release Bracket.

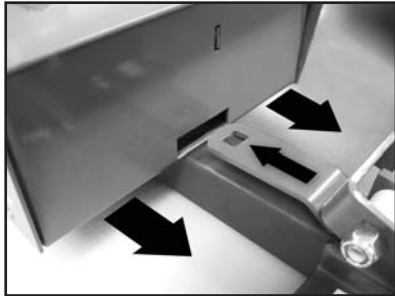


Fig 8 - Latch Tongue into Control Box

Slide Control Box forward so that the tongue of the Release Bracket slides into slot and latches inside the Control Box (See Fig 8).

Lift Cover off Control Box and lay back onto chute top rail. Attach Control Box to top rail with Box Brackets, bolts & nuts (See Fig 9).



Fig 7 - Remove Screws

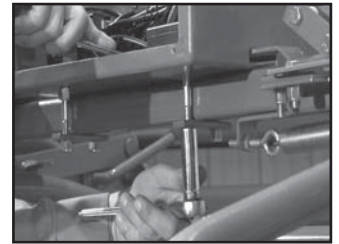


Fig 9 - Attach Control Box

Step 4a - Connect Power Supply

IMPORTANT: To maintain the charge of the storage battery during shipment, a protective plastic cap covers the positive lead (See Fig 10).



Remove this protective cap and attach the duplexed wires to the positive lead on the battery (See Fig 11).

NOTE: Q36 Control Box will not operate if these wires are not connected to the storage battery.

Fig 10 - Remove Protective Cap

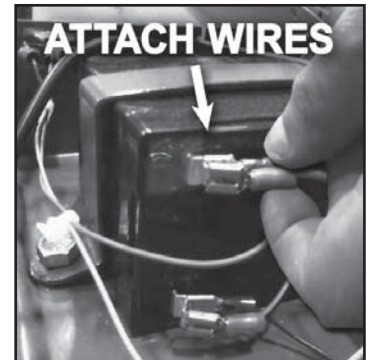


Fig 11 - Attach Duplexed Wires

Step 4b - Measure Location

Use Tape Measure to locate the Control Box approximately 16½" to 17½" from back of chute to back of Control Box (See Fig 12a, Fig 12b, Fig 12c). Tighten all 4 bolts and nuts securely.

Replace Cover, replace and tighten screws.

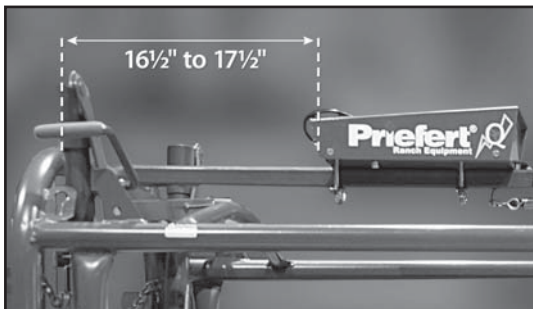


Fig 12a - Location of Control Box



Fig 12b - Measure from Back of Chute

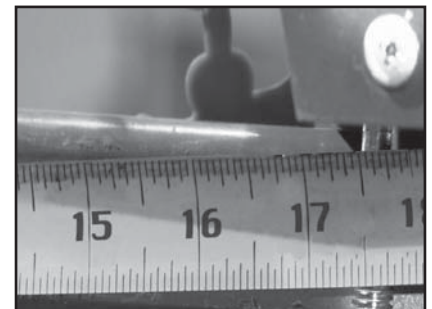


Fig 12c - to Back of Control Box

Step 5 - Installation Complete

Close Front Gate. Turn on Power Switch (See Fig 13). Front Gate will release, which indicates the Q36 is active and functioning

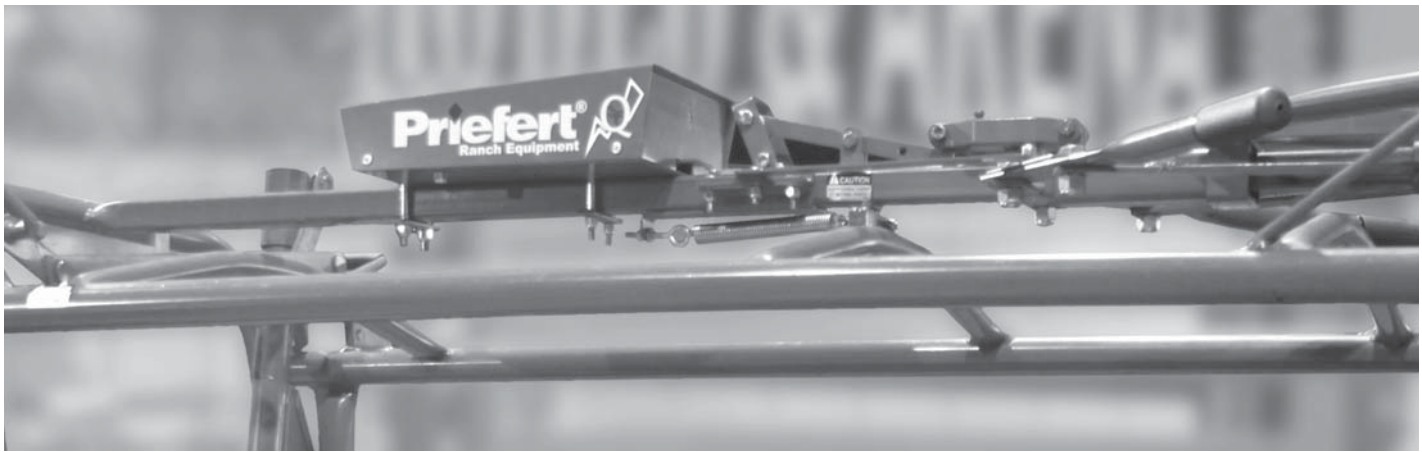


Fig 14 - One-Button Remote

Chute is now ready to operate with the Q36 Solar Powered Control Box. Operation is easily handled with one button on the Remote (See Fig 14). Remote is programmed from the factory, but if an additional remote is desired, it will need to be programmed to your Control Box (See Step 6).



Fig 13 - Power Switch



Step 6 - Programming Additional Remotes

The Q36 Comes with one Remote control pre-programmed from the factory. However, additional Remotes may be purchased for convenience. Any additional remotes will need to be programmed to the Control Box. The following steps will guide you through the programming process.



Fig 15 - Remove Screws



Fig 16 - Circuit Board Box



Fig 18 - Program Remote

1. Find and remove 4 screws from the Cover of the Q36 Control Box (See Fig 15). Lift Cover off Control Box and lay back onto chute top rail.
2. Locate the circuit board box and remove the two screws holding the cover (See Fig 16). Turn power on, Green LED power light will illuminate. Press and hold the function button until Red LED light illuminates (See Fig 17).
3. While red LED light is on, press the button on the Remote (See Fig 18). The LED light will blink and Chute release will trip to indicate programming is active. When red LED light goes off, programming is complete. Replace cover on circuit board box, and cover on Control Box.

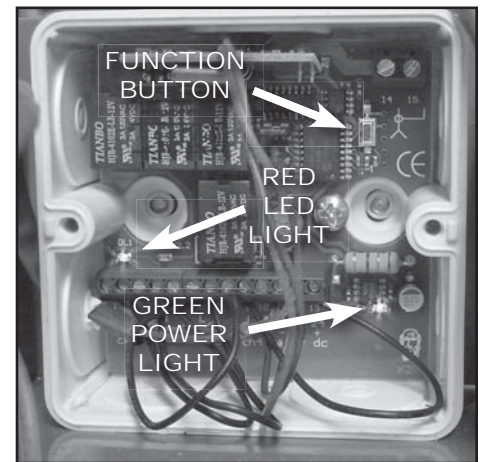


Fig 17 - Circuit Board Box Components

Repeat this process for any additional Remote programming.

1-800-527-8616
903-572-1741 903-572-2798 Fax
sales@priefert.com

Priefert[®]
Ranch Equipment

www.priefert.com

2630 S. Jefferson
P.O. Box 1540
Mt. Pleasant, TX 75456-1540